

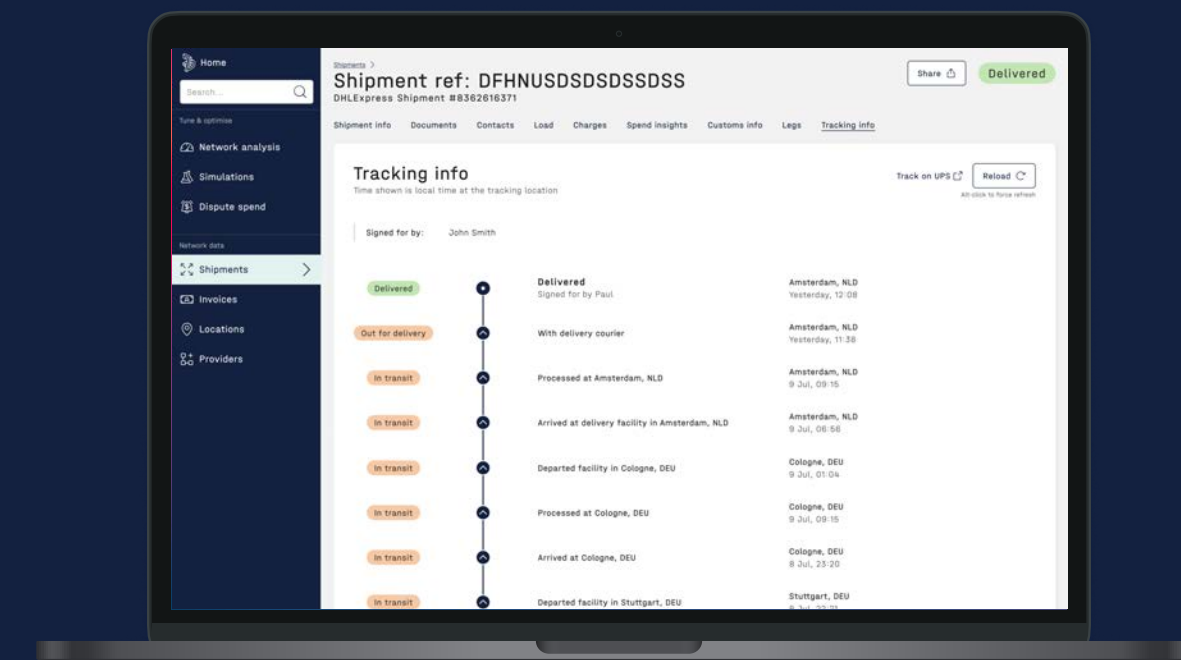
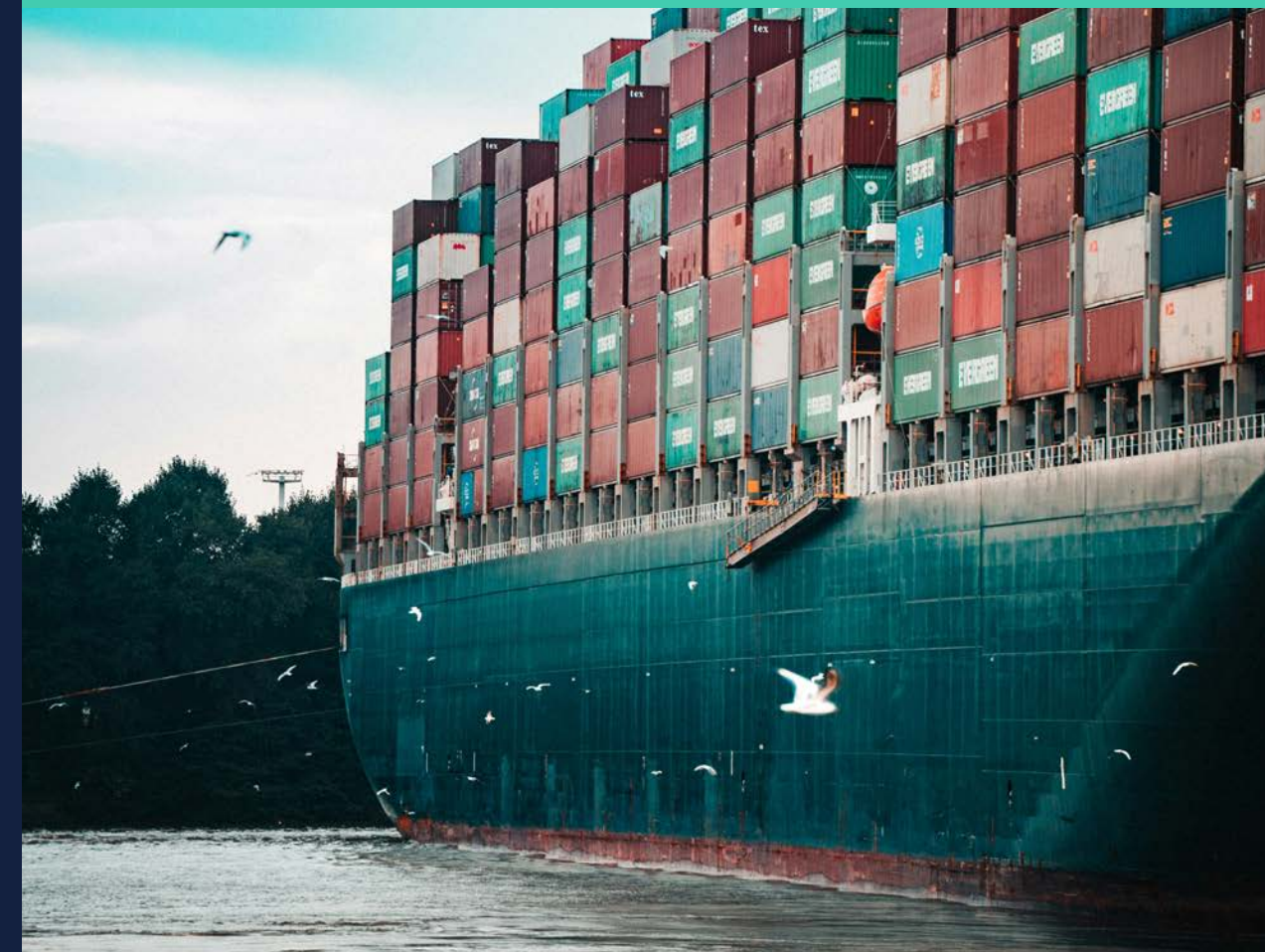
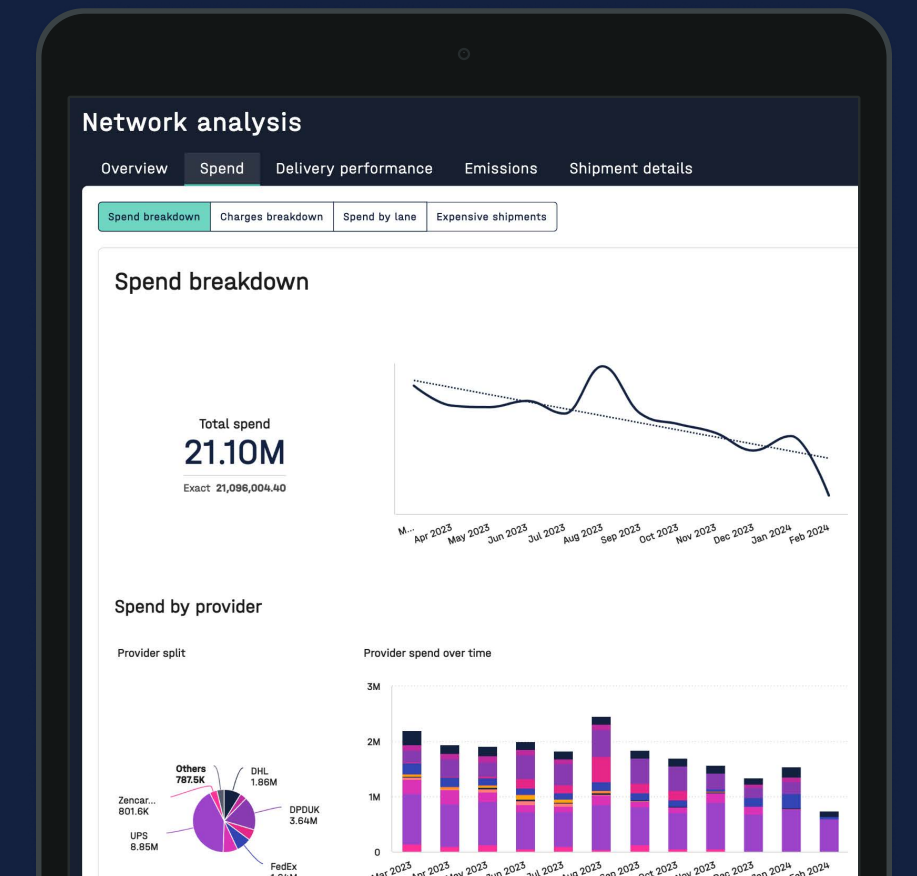


7bridges®

The 7bridges platform

AI-powered Supply Chain Technology

Trusted by the likes of:





Making changes to your supply chain always seems to **come with as many potential pitfalls as it does opportunities.**

Ranging from improving service levels and quality to more efficient deliveries you're likely focusing on a siloed set of improvements.

But given the complexity of modern supply chains, can you do that without having to improve several other systems and processes at the same time? And is it not more impactful to look at it more holistically?

It's important to think of supply chains in an outcome-driven fashion, focusing on how they can deliver business outcomes like increased revenue, improved customer satisfaction, better performance and quality or enhanced agility, rather than as narrow, self contained (while still extremely time intensive) process improvements.

Without understanding how all areas of your supply chain impact and interact with one another, **it can be difficult to identify where to make improvements first in order to reach the goal of delivering an outcome-driven supply chain.**

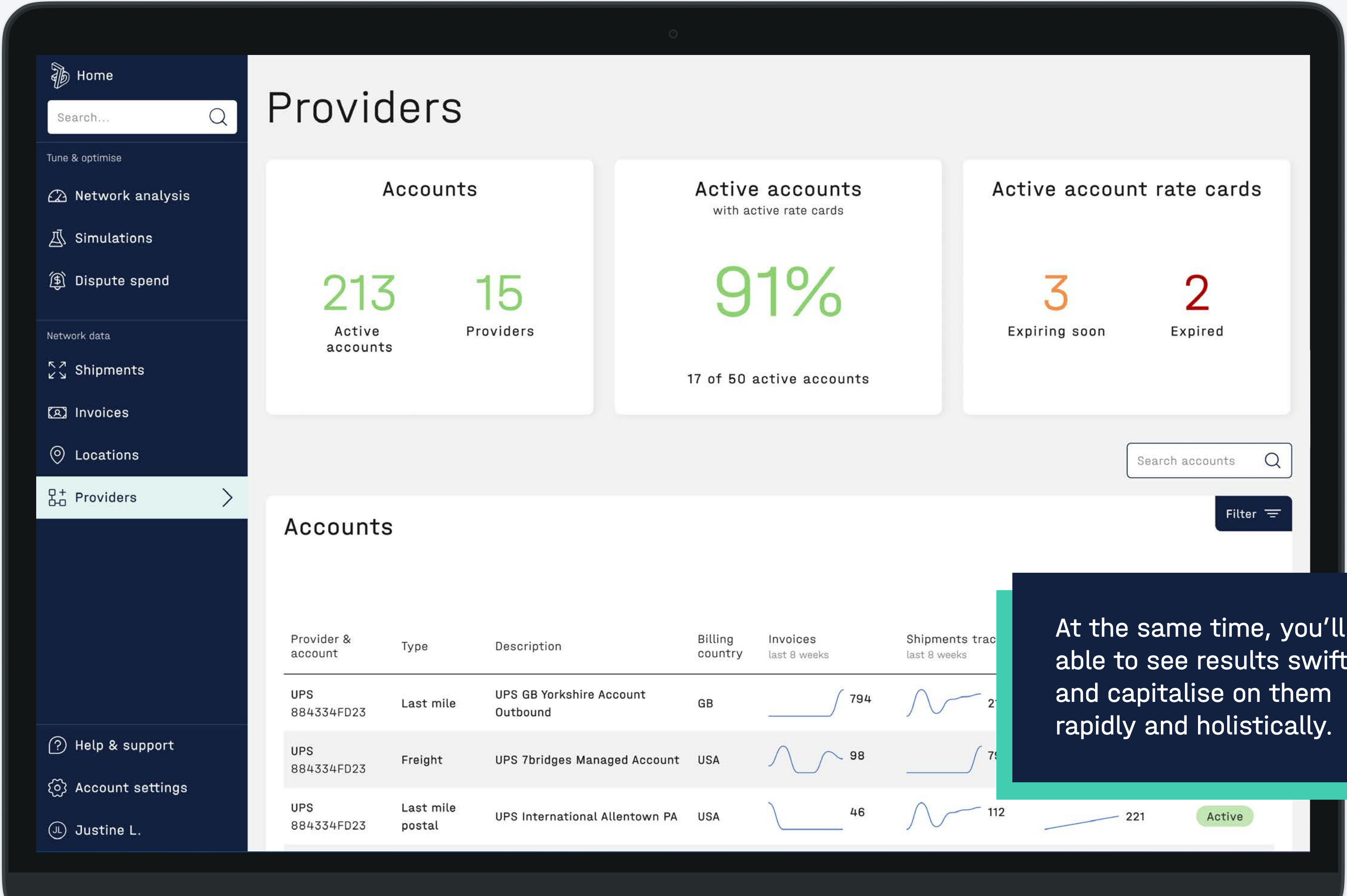
A platform focused on driving outcomes

The 7bridges platform is designed to help you overcome the challenges and embrace opportunities.

By enabling end-to-end visibility and automated resilience through an all in one solution you'll be able to fully understand the what, where, who and why of your supply chain.

With that knowledge you'll know what to optimise and why, as well as how to effectively measure success in ways that fuels further improvements.

Best of all, this is all done in a low-impact fashion, ensuring minimal disruption and IT resources from your side.

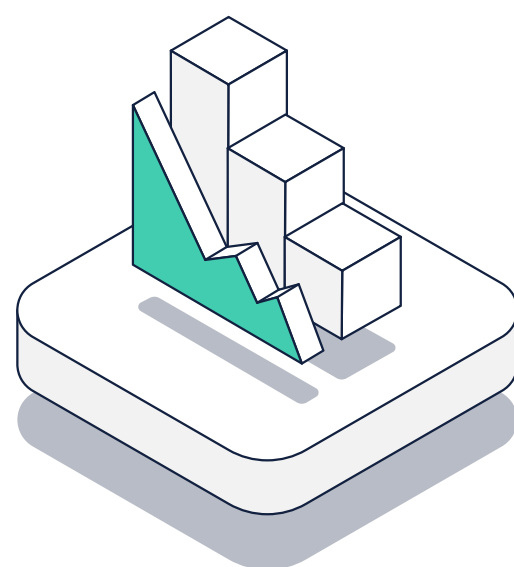


1. The first step we take to help you achieve an outcome-driven supply chain is to **consolidate all your data into one place.**

Key features:



Baseline your operations



Benchmark against your market



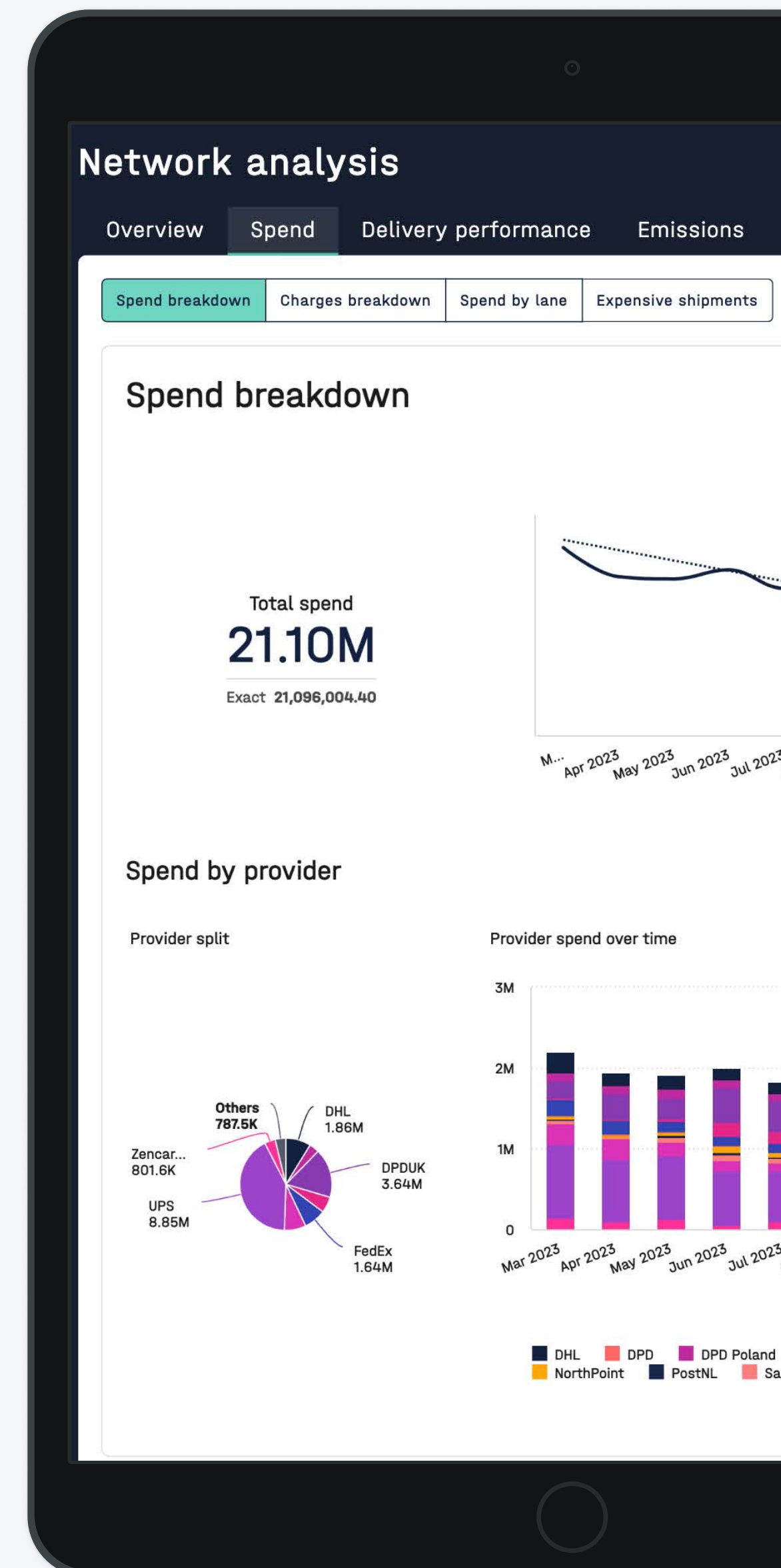
Identify areas where most impact on your operations can be made

This provides you with end-to-end, in depth visibility of service level performance (SLAs), cost and emissions across your entire network.

This opens up a host of questions:

- ✓ How can you ensure you're getting competitive rates from providers?
- ✓ How do you calculate your cost to serve?
- ✓ How can you improve performance to protect and drive revenue?
- ✓ How do you better measure and track carrier performance?
- ✓ Are your deliveries being met effectively?

You'll finally answer these questions and many more, by both identifying them within your data yourself, or by having our AI highlight areas of improvement.



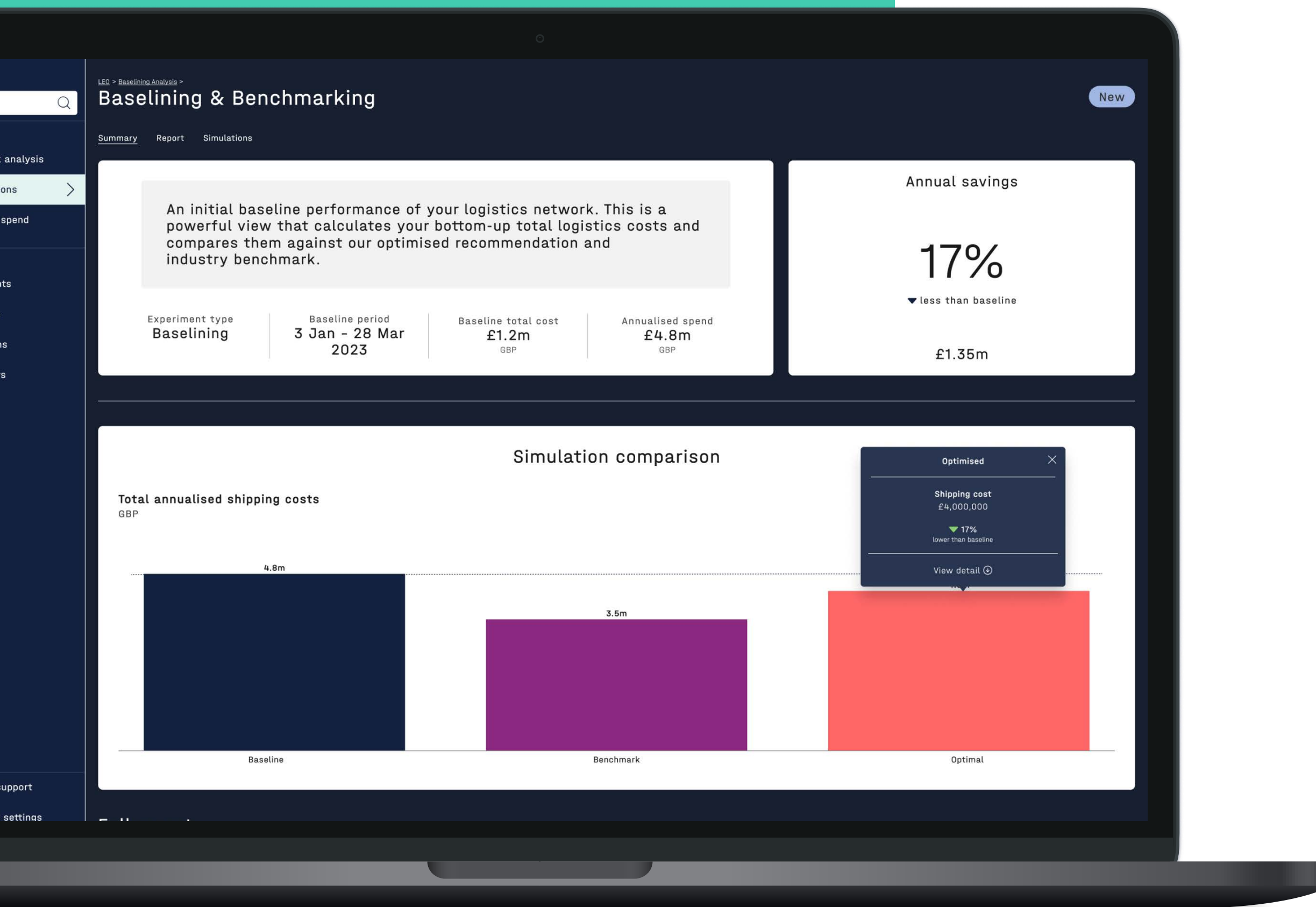
2. With all your data consolidated into one location, the next step is to enable you to run complex, multi-outcome simulations that use your actual data to explore deeper.

Ask more strategic questions of your supply chain:

- ✓ Are you getting the best performance or benchmarked costs available?
- ✓ Could you add new carriers into your operations, or opt for a multi-carrier strategy?
- ✓ What would happen if you added/removed a distribution centre to/from your network?
- ✓ How can you reduce your emissions levels?
- ✓ How can you minimise or avoid lost revenue from stock outs?

Simulations ensure your data works for you, and can help you answer these questions and more, with deep, layered insights into the answers.

You have the best possible way of identifying the route to success that works for you, enabling you to embed strategic decision making into your supply chain.



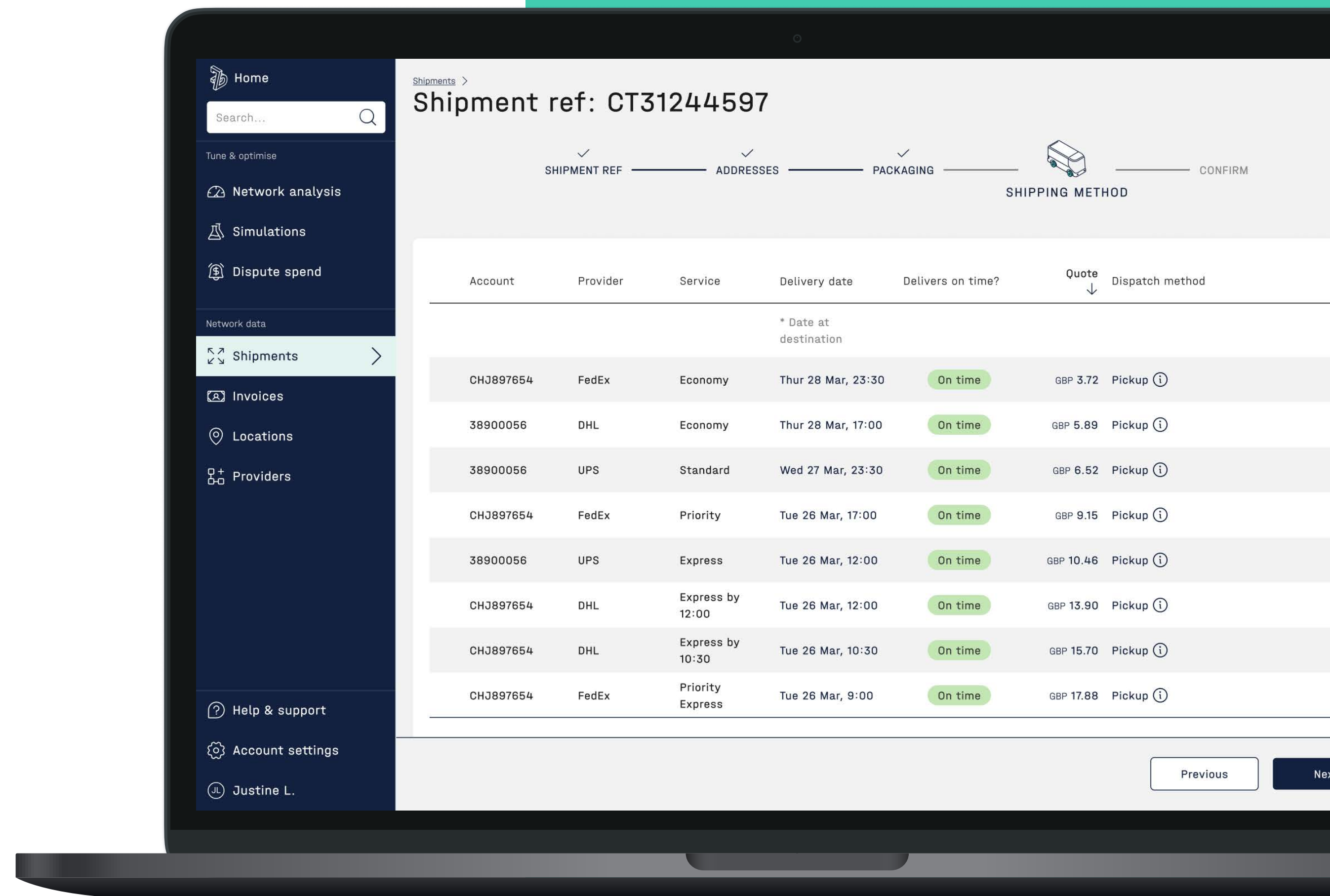
3. The third step is to allow you to put your newfound knowledge and insight into action through automation.

You can automate your shipment booking operations and gain a near real-time view of what's happening. This enables you to respond to disruption and calibrate rapidly.



As a result you can be sure that your goods are being prepared, shipped and delivered while always balancing for cost, performance and emissions. It also frees you from carrier lock-in - particularly important when dealing with speciality carriers - and ensures you're always getting the best possible service regardless of external factors.

This ensures you can automate resilience across your operations, meaning you always meet the delivery expectations of your customers while still overcoming disruption in a rapid and efficient fashion.

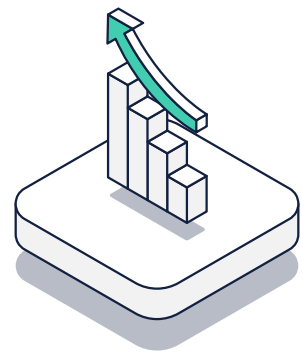


Key benefits

Thanks to 7bridges you can:

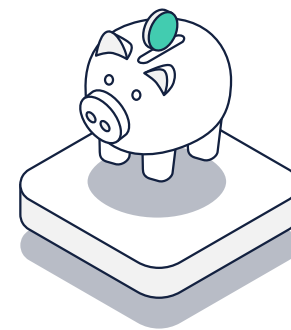


Overcome disruption by increasing resilience and ensuring delivery times



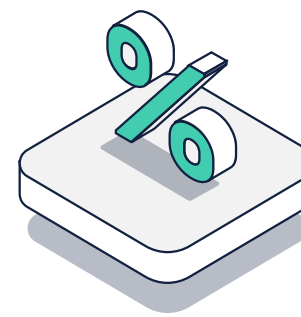
3x ROI

on average within twelve months of signing



29%

average savings achieved



18%

better procurement rates with logistics companies

Enabling smarter supply chains

- ✓ Control costs while balancing for performance
- ✓ Gain end-to-end visibility across your supply chain
- ✓ Ensure that you're receiving the level of supplier service you're paying for
- ✓ Create a detailed baseline of your logistics performance
- ✓ Understand how to enter new markets
- ✓ Automate logistics processes to champion efficiency
- ✓ Engage with additional carriers based on all possible rate cards for every shipment
- ✓ Embed resilience throughout your supply chain
- ✓ Respond rapidly to external events in real time to mitigate disruption and delay
- ✓ Increase customer satisfaction and loyalty
- ✓ Consolidate all your data into one place
- ✓ Be better positioned to make strategic data-led choices about your supply chain

The 7bridges platform can help you take your supply chain **from a place of reactivity to proactivity.**

This gives you the ability to understand the impact of every decision you make – gathering all your data in one powerful platform so you have full control and a birds-eye view. Our AI lets you test out new ideas and adapt to real world disruptions; giving you more room to innovate.

7bridges supports you in reinventing your supply chain because **smarter supply chains benefit everyone.**

[Contact us to start your journey](#)

